



Accessory Name - ENGINE DRESSER BAR KIT

Model – BSA GOLDSTAR 650

Genuine Motorcycle Accessory Fitment Instructions

WARNING: BSA genuine accessories are designed to fit only the specific BSA motorcycle(s) that are specified above. They should not be fitted to any other type of motorcycle. Pay particular attention to the warnings & cautions contained in this instruction. Failure to do so may result in an incorrect installation of the accessory which could result in an unsafe riding condition and possible accident. If any doubt always seek help from your authorised BSA dealer.

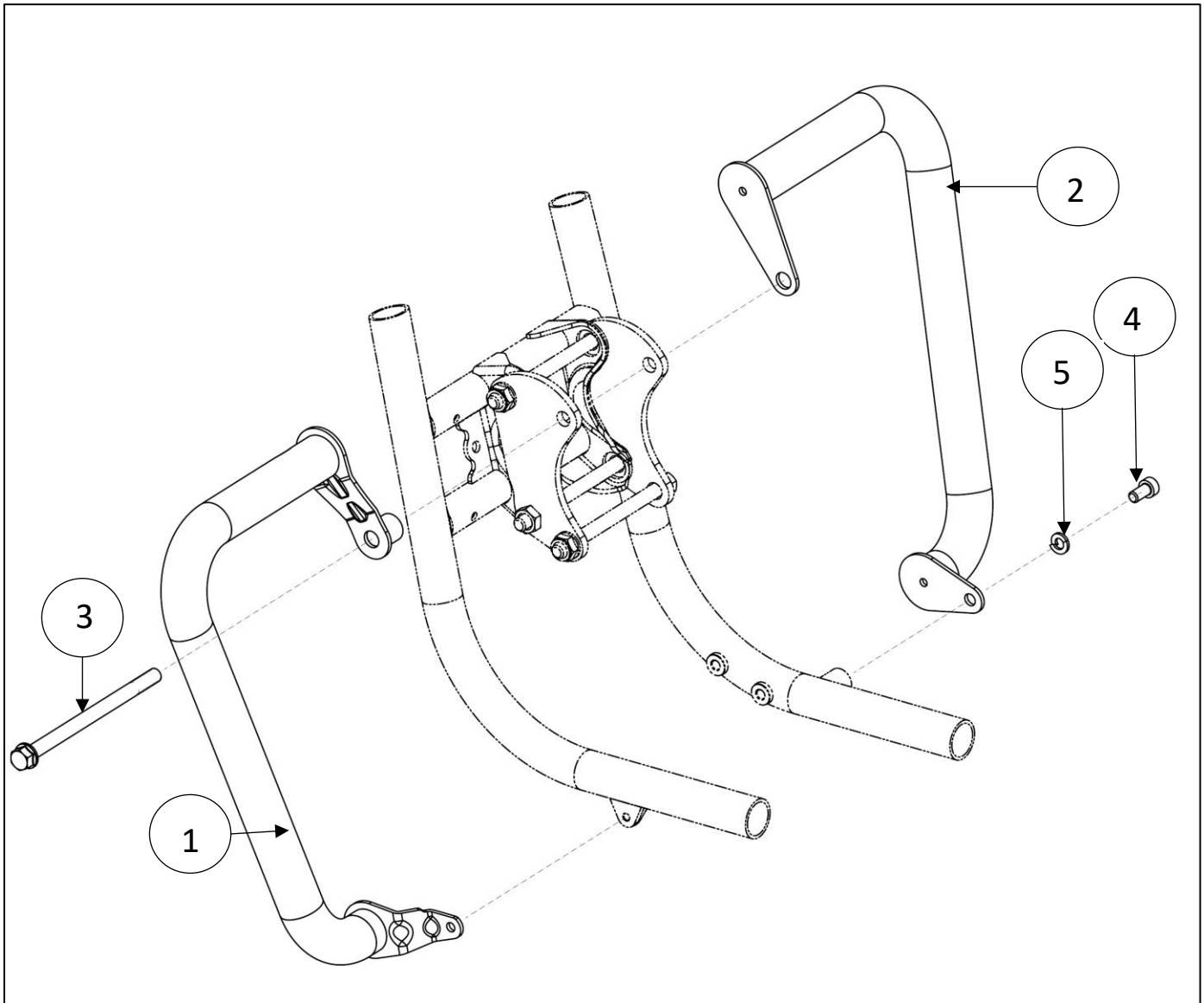
WARNING: Before starting any accessory kit installation ensure the motorcycle is supported in a stable condition. Failure to support the motorcycle correctly could lead to motorcycle damage or personal injury.

WARNING: All fixings must be tightened to the torque values specified in this instruction. Failure to tighten fixings to correct torque could result in an unsafe riding condition and possible accident

CAUTION: Care should be taken when fitting any accessory kit. Incorrect handling of kit components or the use of incorrect tools could lead to component or motorcycle damage.

NOTE: The content of this instruction is subject to change at any time without notice or liability. BSA reserves the right to revise the information presented at any time.

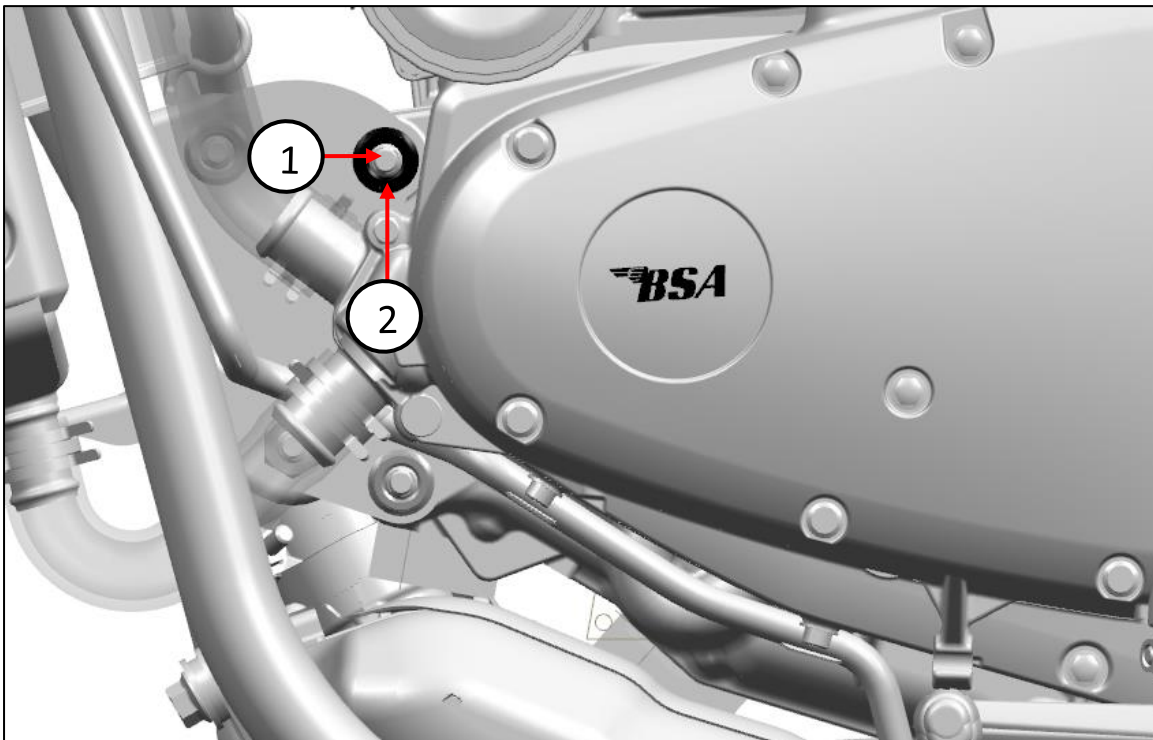
T14020B10010N-ENGINE DRESSER BAR KIT




Item	Part no	Description	Qty
1	T14020B10020N	ENGINE DRESSER BAR LH	1
2	T14020B10030N	ENGINE DRESSER BAR RH	1
3	SF0102545	BOLT HEX FL M10X1.25X150X10.9	1
4	2W_SP0708010	SOCKET HEAD SCREW M8X16	1
5	2W_SP3908001	2W_SPRING WASHER FOR M8	1

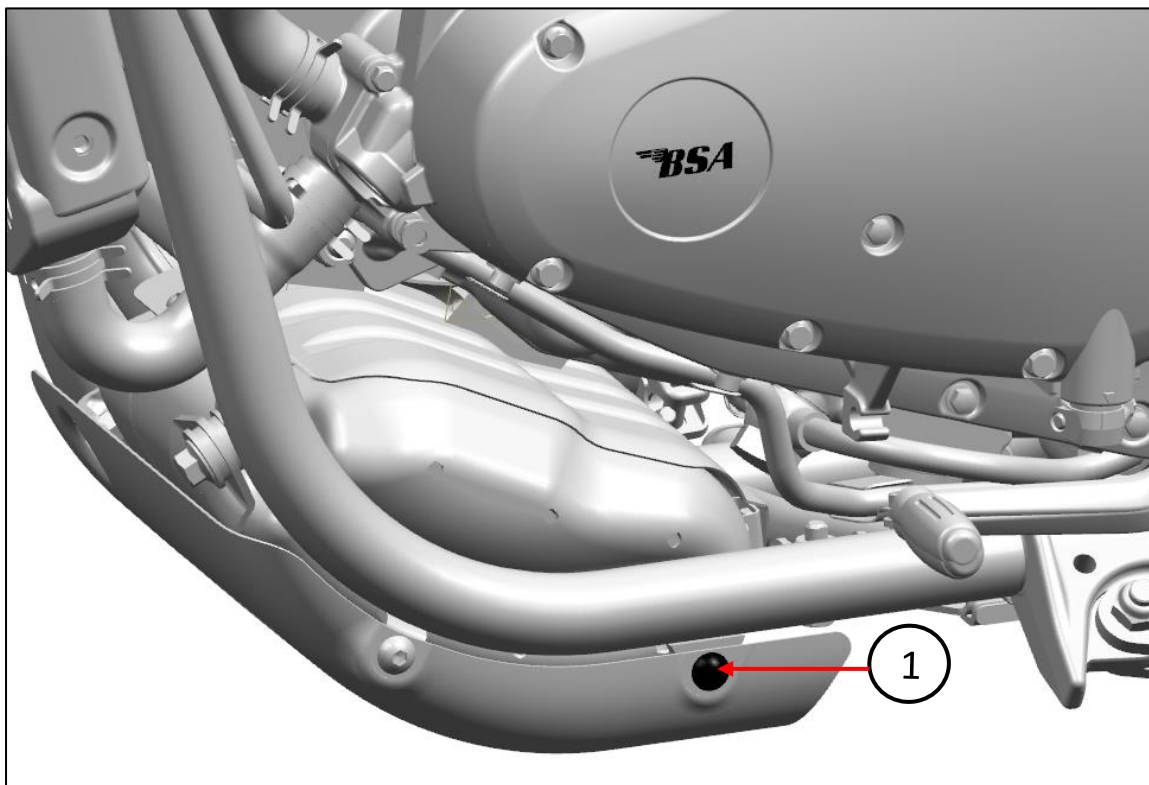
Fitment:


1 Remove engine mounting front bolt (1) & Nut (2) & retain Nut for reuse.



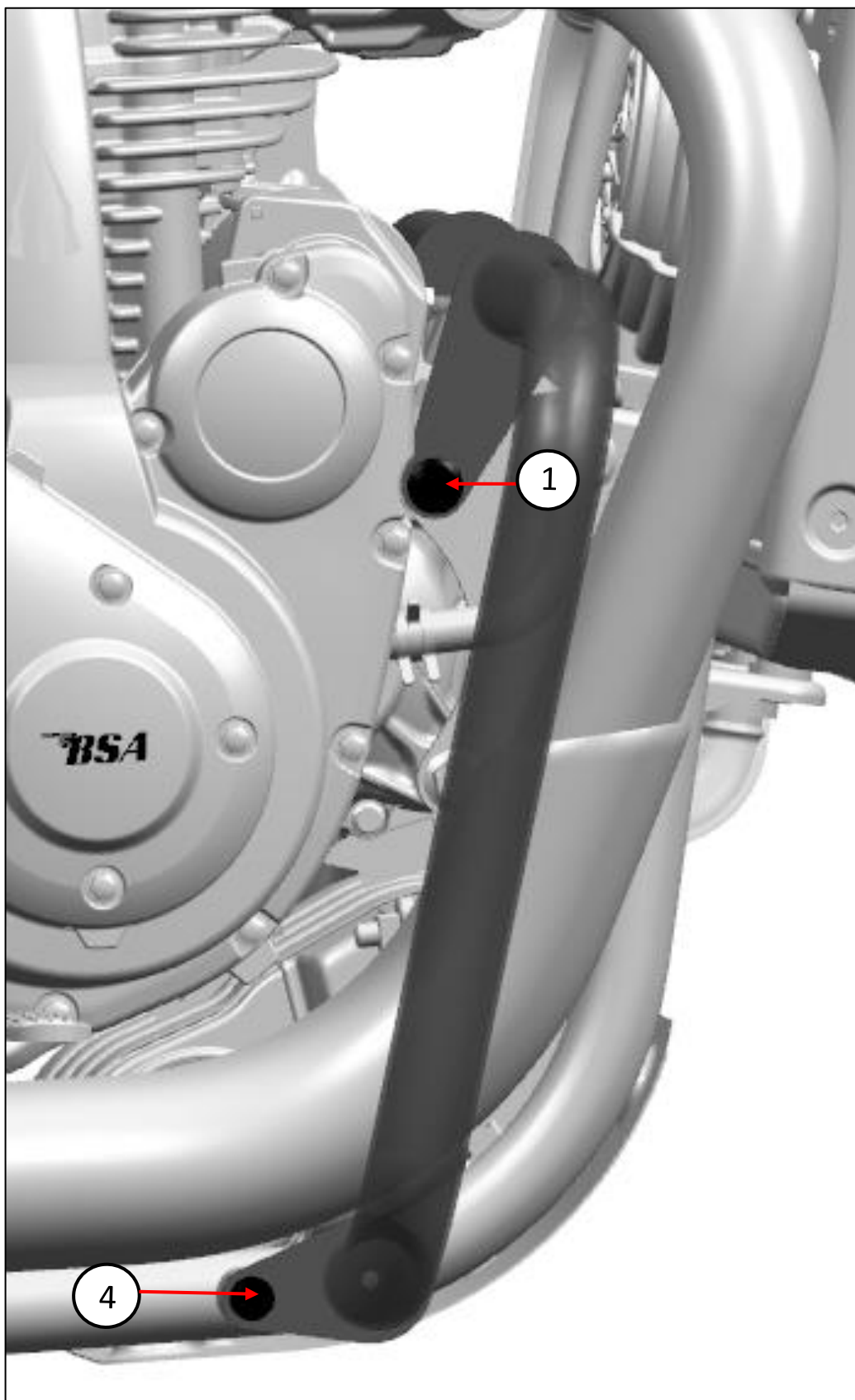
	14 mm Socket & Ratchet
------------------------------------------------------------------------------------	------------------------

2 Remove bash plate mounting rear LH side bolt (1) & retain for reuse.



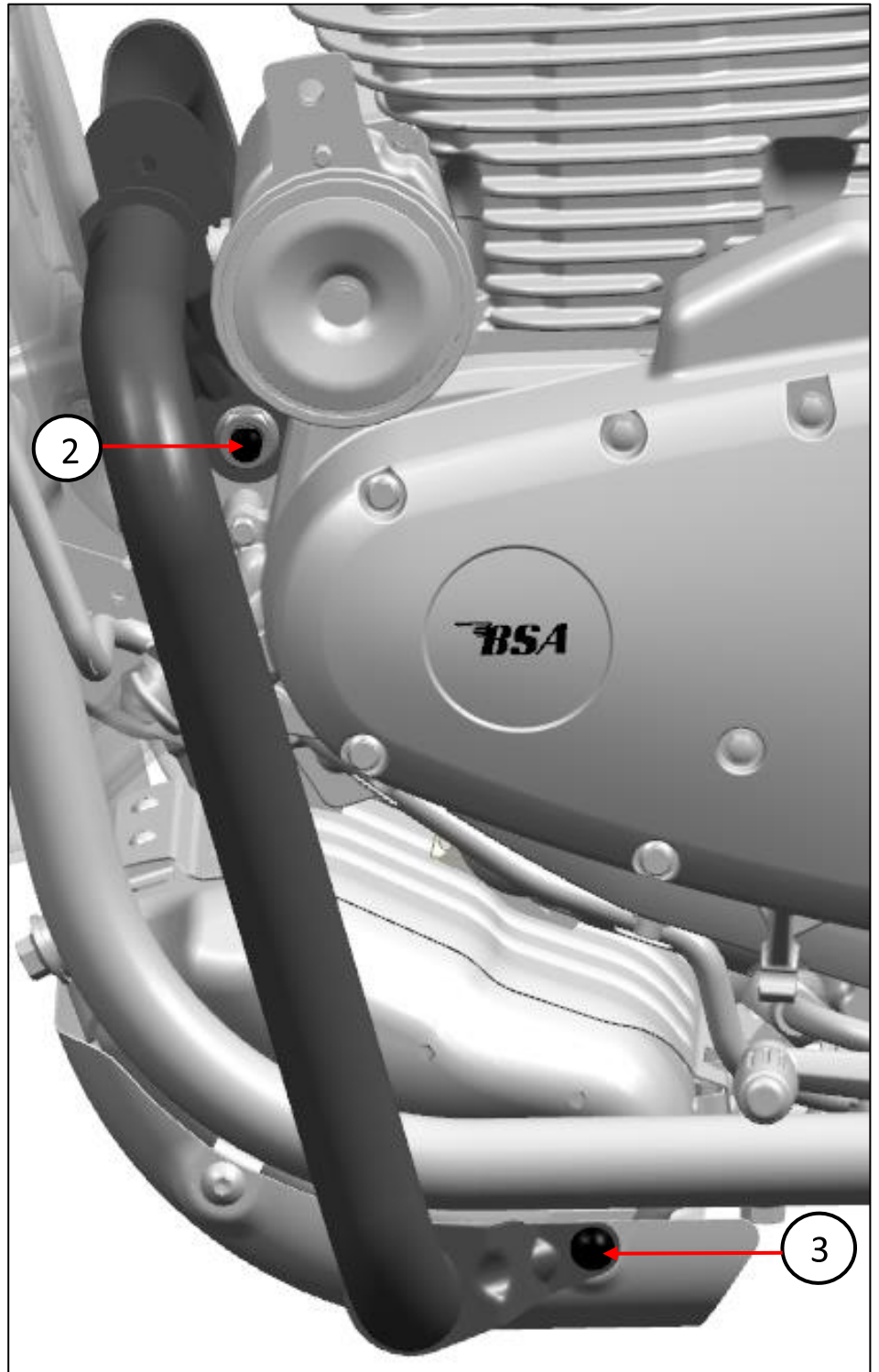
	5 mm hexagonal bit & Ratchet
-------------------------------------------------------------------------------------	------------------------------


3 Locate Engine dresser bar RH on engine mounting at top side by using M10 x150 bolt (P/N SF0102545) (1) & tighten the lower mounting of dresser bar on frame by using M8 x 16 bolt (P/N 2W_SP0708010) (4).




	7 mm hexagonal bit & Ratchet
	Tighten the bolt to 25 Nm

4 Assemble Engine dresser bar LH on top side by using Engine mounting retained M10 NUT (2), tighten the lower mounting of dresser bar on frame by using retained M6 bolt on LH side (3) &



	14 mm Socket & Ratchet
	Tighten the bolt to 40 Nm

	5 mm hexagonal bit & Ratchet
	Tighten the bolt to 12 Nm

⚠ WARNING: After fitting any genuine BSA accessory always ride the motorcycle with caution and allow time to become familiar with any change in the motorcycle handling characteristics. Failure to become familiar with any change in the motorcycle handling characteristics may cause the motorcycle to become unstable and result in an accident.